



QuarkXPress 7.0 How-To...

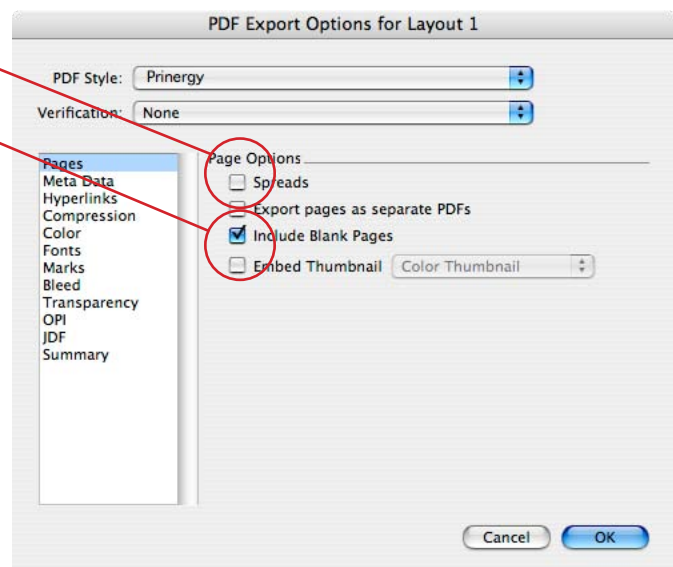
Export a Print Ready PDF for Conventional Printing

Quark 7 allows a preset to be created. Select Edit - Output Styles... then select PDF under the New pop-up menu.

Use these screen captures as guides for exporting your files to PDF for Prinergy.

Do not enable spreads

Include blank pages

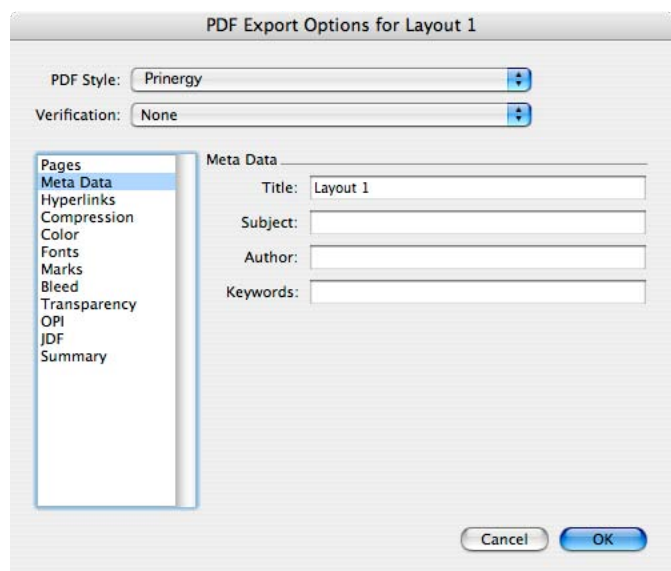




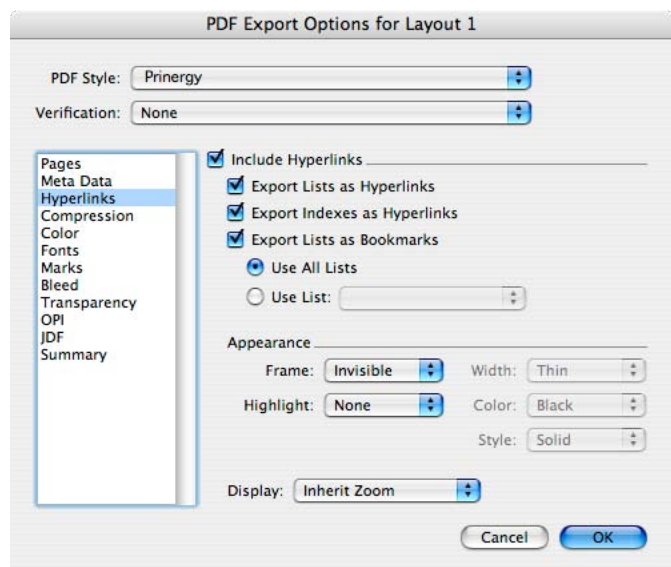
QuarkXPress 7.0 How-To...

Export a Print Ready PDF for Conventional Printing

Feel free to fill in these fields, but they are not necessary.



Leaving these options to their default settings is fine.



403 Brightseat Rd
Landover, MD 20785
301.499.9200
(toll free) 1.800.651.5050
(fax) 301.499.9304
www.corppress.com

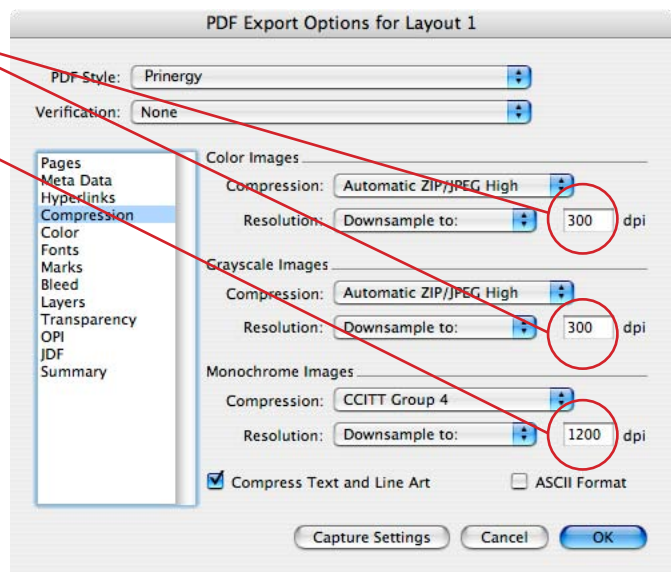


QuarkXPress 7.0 How-To...

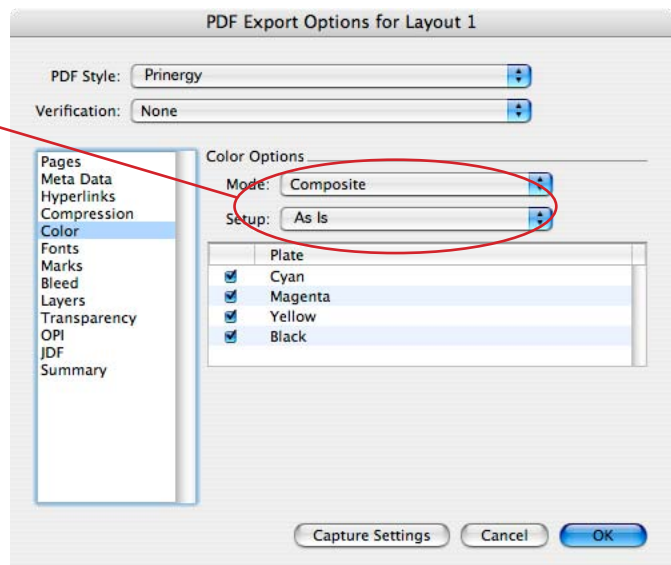
Export a Print Ready PDF for Conventional Printing

Set downsampling to 300 for images

Set downsampling to 1200 for bitmaps



Set output to "Composite As Is"



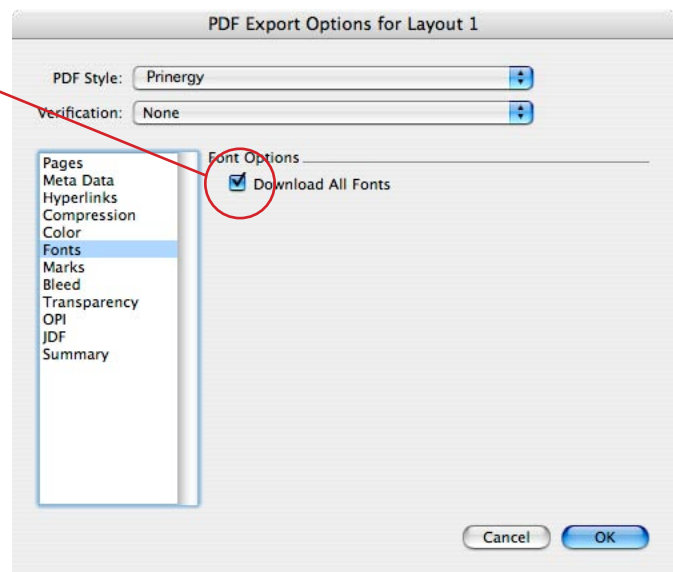
403 Brightseat Rd
Landover, MD 20785
301.499.9200
(toll free) 1.800.651.5050
(fax) 301.499.9304
www.corppress.com



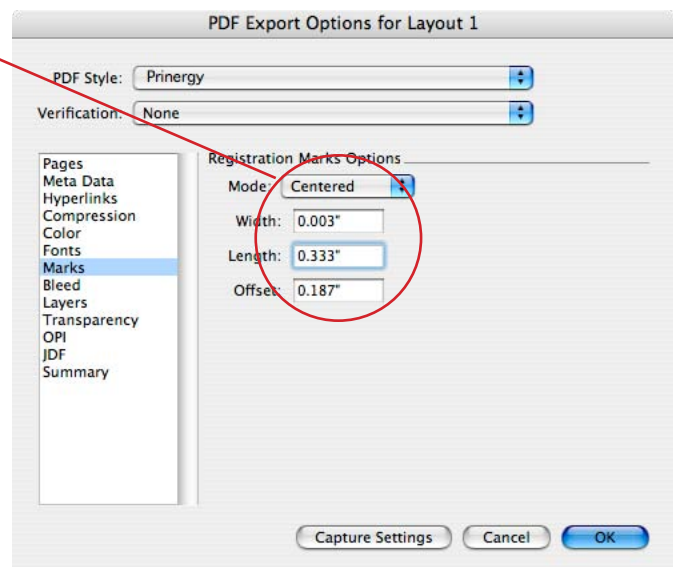
QuarkXPress 7.0 How-To...

Export a Print Ready PDF for Conventional Printing

Embed all fonts.



Include registration marks



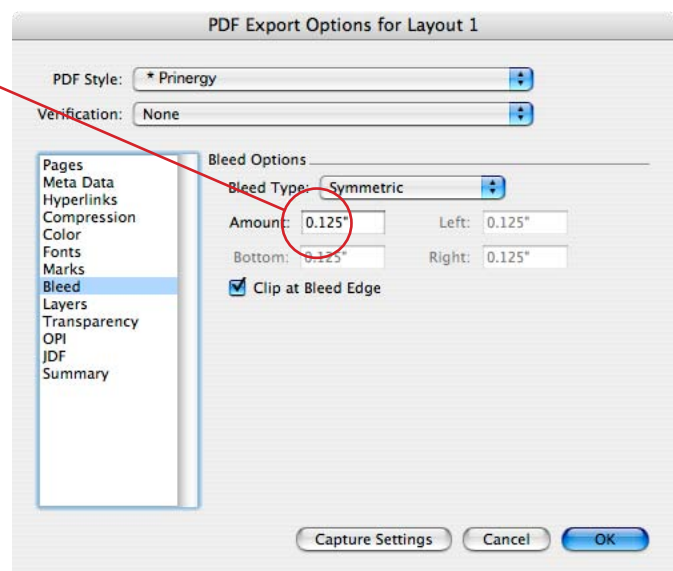
403 Brightseat Rd
Landover, MD 20785
301.499.9200
(toll free) 1.800.651.5050
(fax) 301.499.9304
www.corppress.com



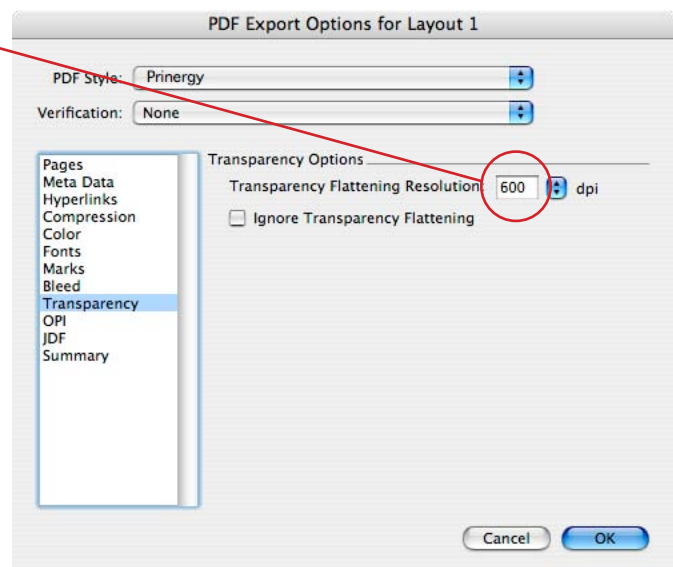
QuarkXPress 7.0 How-To...

Export a Print Ready PDF for Conventional Printing

Set bleeds to 0.125"



Set flattening to 600 dpi



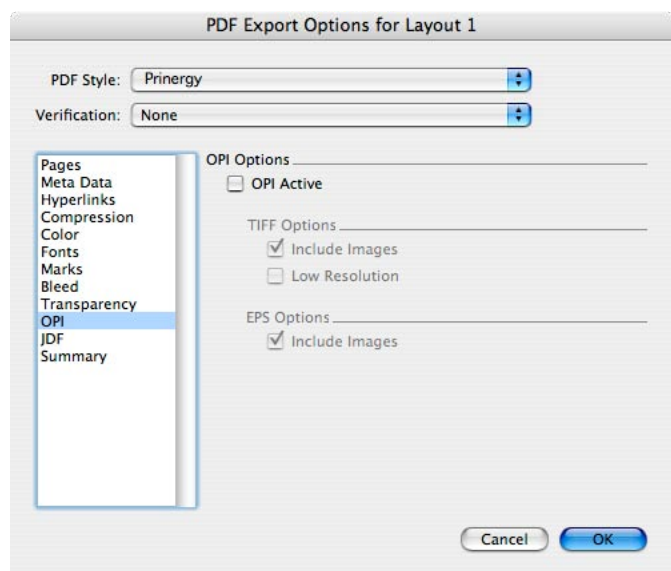
403 Brightseat Rd
Landover, MD 20785
301.499.9200
(toll free) 1.800.651.5050
(fax) 301.499.9304
www.corppress.com



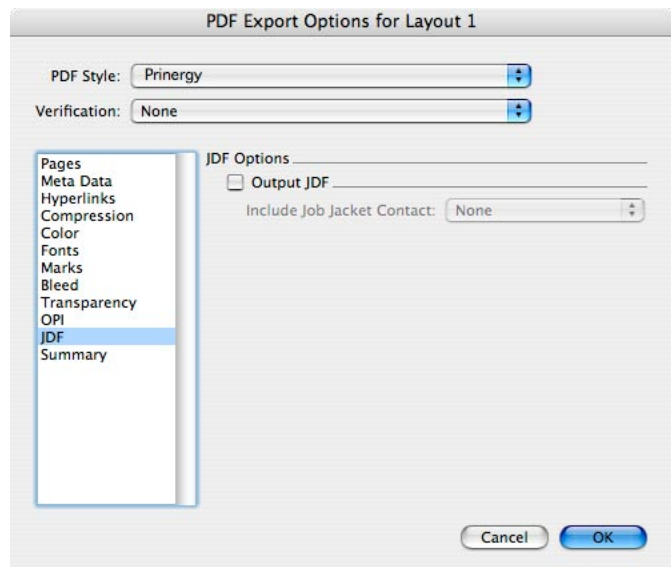
QuarkXPress 7.0 How-To...

Export a Print Ready PDF for Conventional Printing

Do not use OPI



JDF settings are not needed



403 Brightseat Rd
Landover, MD 20785
301.499.9200
(toll free) 1.800.651.5050
(fax) 301.499.9304
www.corppress.com